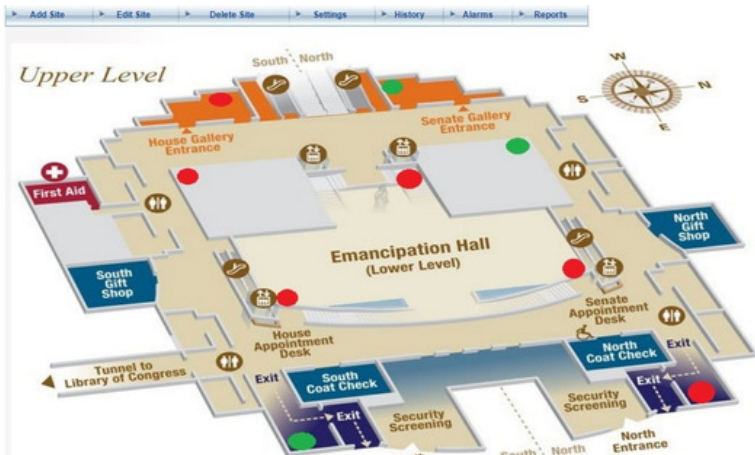


Consultix Monitoring Systems

Panoramic view of IBS/DAS Network
Availability and User Experience

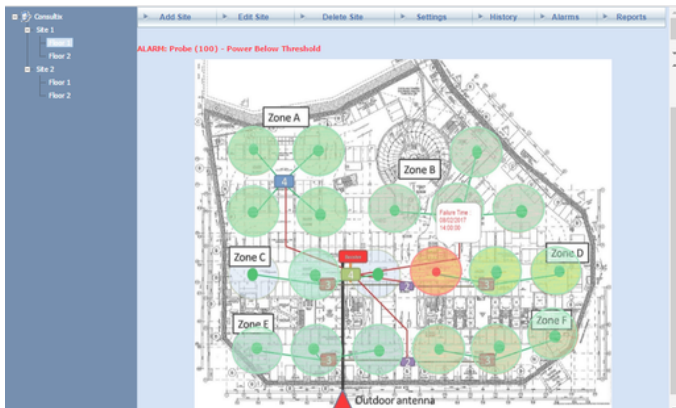


With over 80 percent of mobile traffic consumed indoors and rapid growth in 4G adoption and WiFi fueling this percentage for years, poor inbuilding coverage still leaves valuable licensed spectrum underutilized in addition to deteriorating user experience particularly in traffic-demanding applications such as online video streaming.

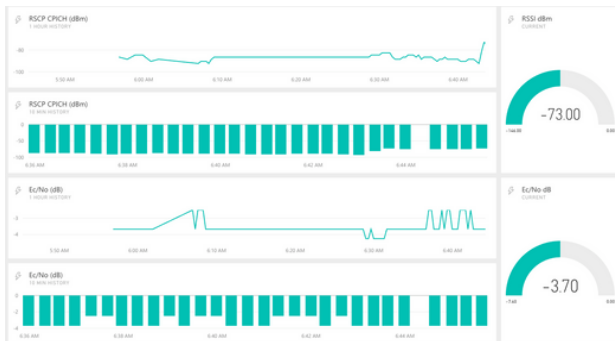
Mobile network operators, neutral host providers, building, enterprise and venue owners can all leverage this growth in 4G and WiFi traffic if adequate care is given to the indoor network availability and user experience.

Based on our variety of wireless probes, Consultix provides a family of versatile monitoring systems that aggregate different levels of over-the-air network sensing to ensure uninterrupted operations, maximum availability and the ultimate user experience.

Locating the source of coverage and quality deterioration and early detection ahead of user complaints are indispensable for effective yet smooth network monitoring. The 24 / 7 monitoring system can be operated autonomously or integrated with the operator's NMC to provision early alarm escalations, service quality insights as well as statistical information.



IAM: Site Status Display



NQM: probe live monitoring mode

Specifications		
General	IAM	NQM
User interface	Web server , Console application or Cloud access	
Management Protocol	SNMP/HTTP/JSON/SOAP (others available)	
Database support	SQL or MySQL	
Forms	Maps, time graph , history logs, and live display	
Firmware upgrade	Console or Over-the-air	
Scheduling Test Campaigns	User defined	
Settings	Site information, Site drawing/maps, alarm thresholds, report format, escalation matrix, and users' privileges	
Floor maps/drawings	PDF, BMP, JPG, PNG,..etc for indoor sites. And Google Maps for outdoor sites	
Access	Multi-user environment with different access layers of privileges	
No. of simultaneous networks	One probe per Network	Many (depending on probe type and test period)
No. of probes per system	>100000	>1000
Probes		
Standards	All	GSM/WCDMA/LTE/CDMA2000 (see different models)
Bands	300 MHZ to 3000 MHZ	700, 850, 900, 1700, 1800, 1900, 2100, 2600 Bands (see different models)
Measurements	RF signal level	LTE Measurements <ul style="list-style-type: none"> • EARFCN, Physical Cell ID, Received Signal Power, RSRP & RSRQ. WCDMA Measurements <ul style="list-style-type: none"> • UARFCN, PSC, SCR, RSCP, Ec/Io, RSSI, and Received Signal Power GSM Measurements <ul style="list-style-type: none"> • RSSI RxQual ARFCN BSIC
Probe connectivity	Low-power Mesh topology, Cellular or WIFI	Cellular or WIFI
Power Supply	Autonomous battery operation (up to 7 years)	AC/DC (optional Power-over-Ethernet)
Operation Temperature	-10 to +40C	
Weight	<150gm	<750gm
Probe installation	Self-mount	Mounting kit supplied
Antenna	External omni-directional multi-band antenna	
GPS	N.A.	Optional



FIND US:

Building 57, Zone 2, District 6, El-Teseen St., 11835, New Cairo City, Cairo, Egypt.
+20225647370 info@consultix-egypt.com

www.consultix-egypt.com